

STONEHENGE





8"x8" | 8"x16" | 16"x16" Field Tile in Pieve



4"x8" | 8"x8" | 8"x16" | 16"x16" Field Tile in Rosta Nuova

AVAILABLE IN:

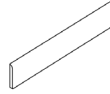
Field Tiles

Pressed Edge

- 4"x8" Natural Finish
- 8"x8" Natural Finish
- 8"x16" Natural Finish
- 16"x16" Natural Finish
- 16"x24" Natural Finish

Trim Pieces

2.5"x16" Bullnose Natural Finish



Mosaics + Special Shapes

- 3"x3" Mosaic Natural Finish
- 29.5"x20.5" Arched Mosaic Natural Finish

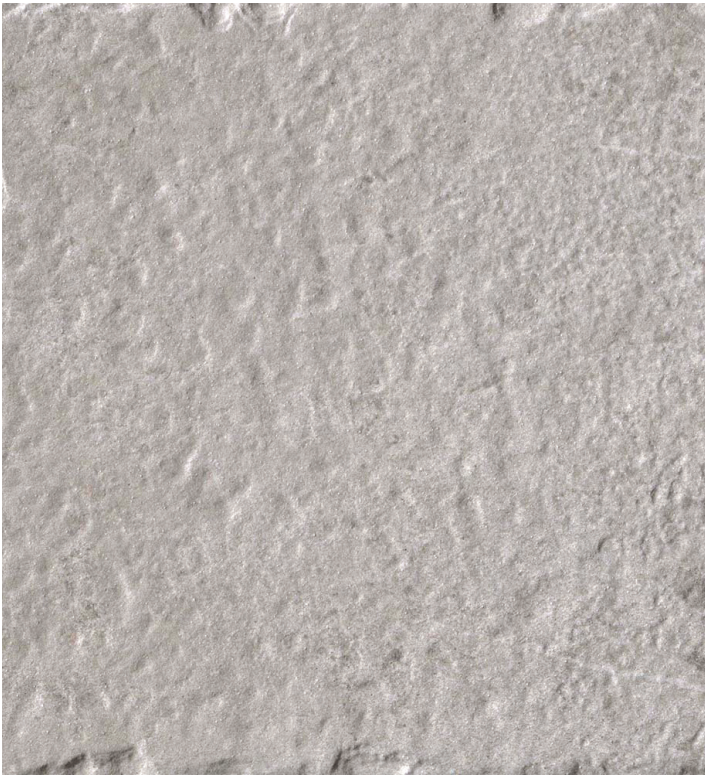
- All sizes are NOMINAL

MADE TO ORDER FIELD TILES AND MOSAICS:

This represents a small portion of the mosaic patterns we offer.
We can cut any field tile to create a custom mosaic or field tile size as specified.

FIELD TILES		CUBES		BASKETWEAVE	
	Any 24" field tile can be cut down to a smaller size in any length and width combination with a 1" minimum.		2" 4"		1 3/8"x3" 2"x4"
		BRICKS		DIAMONDS	
			1"x2" 1"x3" 1 3/8"x3" 2"x4"		2"
FIELD SHAPES*		CHEVRONS		HERRINGBONE	
	Half Hexagon 6.7" Base		2"x12"		1"x2" 2"x4" 5/8"x4"
	Diamond 4"			HEXAGONS	
	Hexagon 6"	OCTAGONS			1 1/8" 2"
	Chevron 2"x12" 6"x24"		2" w/ 0.6" Squares		
TRAPEZOID W/ DOT		SQUARES		RECTANGLES	
	4"x2 1/2" w/ 5/8" Dot		1"x1" 1 3/8"x1 3/8" 2"x2" 3"x3"		1"x2" 1"x4"

*Other sizes available upon request



Broletto



Due Maesta



Rosta Nuova



Pieve

Colors shown may vary from actual product. Final selection should be made from actual product samples.

3"X3" MOSAIC



Broletto



Due Maesta



Rosta Nuova



Pieve

29.5"X20.5" ARCHED MOSAIC



Broletto



Due Maesta



Rosta Nuova



Pieve



Due Maesta and
Rosta Nuova Mix



8"x8" Field Tile in Rosta Nuova

Features	Test Method	Value
Length and Width	ISO 10545-2	± 0.5% ± 2mm
Thickness	ISO 10545-2	± 5% ± 0.5mm
Striaghtness of Sides	ISO 10545-2	± 3% ± 1.5 mm
Rectangularity	ISO 10545-2	± 3% ± 1.5mm
Surface Flatness	ISO 10545-2	± 0.5% ± 0.5mm
	ASTM C 485	Warpage Diagonal/Edge ±0.4%
Water Absorption	ISO 10545-3	≤ 0.3%
Bending Strength	ISO 10545-4	≥ 35 N/mm ²
Breaking Strength		≥ 1300 N
Abrasion Resistance	ISO 10545-7	Class 4
Coefficient of Linear Thermal Expansion	ISO 10545-8	Test Method Available
Thermal Shock Resistance	ISO 10545-9	Resistant
Crazing Resistance	ISO 10545-11	Resistant
Frost Resistance	ISO 10545-12	Resistant
Household Chemical Resistance	ISO 10545-13	Class A
Acid and Base Resistance		Class LA Class HA
Stain Resistance	ISO 10545-14	Class 5
Slip Resistance	DIN 51130	R10 R11
	DCOF TEST	> 0.42
Hardness (Mohs)	-	> 6

According to ANSI and MIA standards, depending on the type and size of tile, it is recommended to have at least a 1/8" wide grout joint for floor tiles in order to be able to fill the grout joint full and never less than 1/16" wide. Please refer to TCNA guidelines for more on grout recommendations.

Product Info:

- Glazed Porcelain Tile
- Natural Finish
- Pressed Edge
- V4 - **EXTREME** Variation
- Frost Resistance = Yes





www.genrose.com