

SHELDON

 **GENROSE**





7"x48" Floor Tile in Taupe



7"x48" Floor Tile in Roble



7"x48" Floor Tile in Bianco

AVAILABLE IN:

Floor Tile		
SIZE	FINISH	COLORS
7"x48"	Matte	Bianco Taupe Beige Roble Brown

All Sizes are Nominal.



Bianco



Taupe



Beige



Roble



Brown



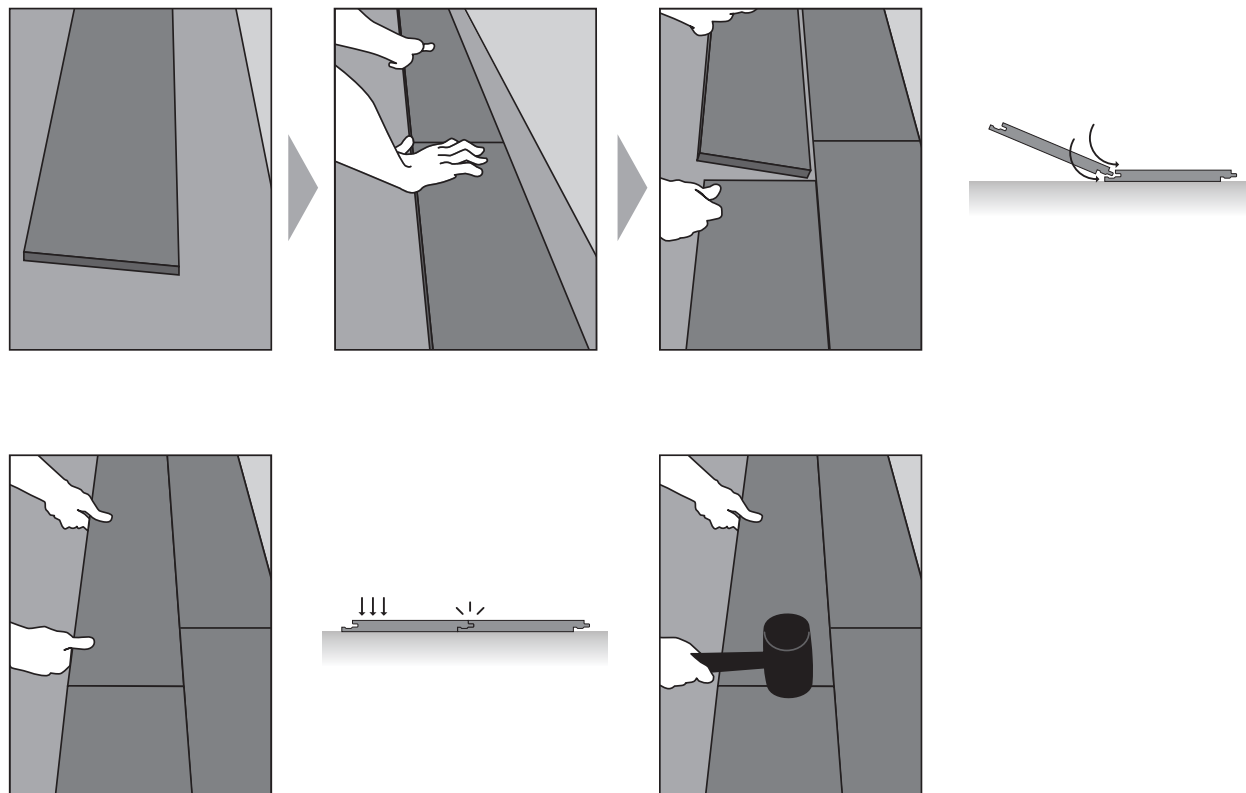
7"x48" Floor Tile in Beige

Colors shown may vary from actual product. Final selection should be made from actual product samples.

INSTALLATION INSTRUCTIONS

Before starting:

- 1 - Before starting to install, you must check that all boxes are in good conditions, the lot number is correct and detect possible defects or variations with respect to the quantity or quality of the original material. Do not handle or install any material with visible defects.
- 2 - Please read the SPC installation instructions carefully before you start.
- 3 - Exposure to high temperatures can damage the material. It is recommended to store indoor and in a controlled temperature between 64° and 84°C. If this condition is not met, it is recommended to acclimatize the merchandise in the room to be installed for a short period of time (24/48 hours), placed flat and without stacking more than 5 boxes.
- 4 - Remove the slats from the boxes 12 hours before installation. When installing, mix tiles or planks from different boxes to promote natural aesthetics.
- 5 - The ideal ambient temperature for installation should be between 59° and 78°F.
- 6 - SPC has a patented locking system that ensures its fixation and should only be secured with an adhesive, for commercial applications with heavy traffic, in areas of passage of heavy elements or factors with wheels.
- 7 - The humidity index of the surface on which it is to be installed must not exceed 2.2Kg / 1000 sq.ft. / 24h (ASTMF-2170).
- 8 - Cover the furniture legs with mats or felt protectors.
- 9 - Floating installations must not support fixed furniture or heavy objects.
- 10 - Do not install this material on carpets, rugs or any other type of similar textile surface.
- 11 - SPC floors with integrated padding do not require the installation of a base layer.
- 12 - Installation of expansion gap is required on surfaces that exceed 2152 sq.ft. or 65 linear feet to avoid deformities of the installation.



FLOOR AND ROOM CONDITIONS

- 1 - SPC materials are resistant to water and humidity but should not be used as a protective barrier against these conditions. The floor on which the SPC flooring is installed must be completely dry and in case of excessive humidity, a 0.15mm polyplastic barrier must be installed before placing the padded underlayment or the slats. Concrete floors must always use moisture protection.
- 2 - Floors must be firm, stable and totally level. All imperfections such as cracks or holes will be filled with a suitable quick-drying material. The surface must be clean of dirt and debris.
- 3 - Laying SPC on ceramic tiles requires a previous leveling with a fast-setting cement-based polymer.
- 4 - In halls with large windows or glazed surfaces and subjected to intense sun, it will be necessary to use adhesives resistant to high temperatures (in case the installation requires gluing) and regulate the temperature of the room (air conditioning) and / or avoid direct radiation on the ground (curtains, awnings, glass sheets ...).
- 5 - Installation on heating underfloor. SPC flooring can be installed on heating underfloor floors. The following instructions must be followed:
 - 5.1 - The maximum soil temperature must not exceed 80°F.
 - 5.2 - Heating system must be started at its maximum capacity and stopped 48 hours before installation or application of the smoothing paste.
 - 5.3 - After installation, turn on the heating system gradually over an hour.

GENERAL CONSIDERATIONS

- Install parallel to the longest wall or the main light source is recommended to enhance the visual effect. Agree with the customer the direction before installation.
- The installer has the final responsibility to check that the conditions of the floor on which it is to be installed are as indicated.

MAINTENANCE

- SPC flooring can be cleaned regularly with a damp mop and a neutral cleaner without corrosive agents.
- Do not use excessive water.
- If water is spilled on the flooring, it should be removed as soon as possible.

GUARANTEE



Households



Commercial premises

The SPC planks have a guarantee in RESIDENTIAL USE OF 30 YEARS and 12 YEARS IN COMMERCIAL USE of INTENSE TRAFFIC. The warranty applies to the material only.

The guarantee is activated on the date of the first installation of the product, provided that it has been stored properly and no alterations of the product have been observed in the first check of it.

Warranty will only apply to the end user (with proof of purchase) and will never be transferable.

Installation must have been carried out by an authorized professional and always following the installation recommendations.



Features	Test Method	Value	
Dimensions	ISO 243337:2006	7" W x 48" H	
Thickness	EN ISO 24346	0.2" (5 mm)	
Thickness Tolerance of Wear Layer	EN ISO 24340	+13%, -10%	
Wear Resistance	EN 13329:Annex E	Class 33 Heavy Commercial Traffic	
Formaldehyde Emission	EN 12149:1997 Test C	Unit: mg/m ³	Not Detected
Vinyl Chloride Monomer	EN 12149:1997 Test B	Unit: mg/kg	Not Detected
Soluble Cadmium	EN 71-3:1994+AC:2002	Unit: mg/m ³	Not Detected
DEHP+BBP+DBP	EN 14372	Not Detected	
DNOP+DIDP+DINP		Not Detected	
Slip Resistance	DIN 51130:2014	≥ R10	
Fire Resistance	EN 13501-1	Class B1 (B- s1,t0)	
Residual Indentation	ISO 24343-1:2012	≤ 0,1 mm	
Peeling Strength	ISO 24345	≥ 70 N/50mm	
Click Tension Force	ISO 24334	≥ 3 kN/m	
Resistance to Staining	EN 26987	No Contamination or Corrosion	
Curling After Exposure to Heat	ISO 23999	≤ 1 mm	
Dimensional Stability	ISO 24337:2006	≤ 0,15 %	
Installation Gap of Click Flooring		≤ 0,15 mm	

Product Info:

- SPC Click Vinyl Plank Flooring
- 5 mm Thickness
- Matte Finish
- 20 mil (0.5 mm) Wear Layer
- 30 Year Limited Guarantee: Residential
- 15 Year Limited Guarantee: Commercial





www.genrose.com